



# COMPANY PROFILE

April 2023

## ABSTRACT

We focus on Rural Developments, places where it is too expensive for big guys to go in...we move in to serve the community and the rural parts of PNG to help Build the Nation. We customize our operational work ethics with Locals. We provide Job Training and create local Employment with Sound Financial Management and Project Supervision, Management and Construction. We deliver finished Projects matching Maximum Value for Money with high Quality ever than before.

**We Build the Future through Connecting the Unreachable...**

Serving the Rural Communities in PNG.

## 1. Company Overview

**Infrastructure Engineering Construction Limited (IECL)** is a 100% locally owned civil engineering construction and consulting firm with its head office based in Port Moresby and branch office in the Eastern Highlands Province.

The company was established on 29<sup>th</sup> September 2016 and has since experienced growth and has extended with diversification of company business gearing up to play a leading role in the field of contracting services like civil works, electrical works, building constructions and maintenance, plants and equipment hire, Consultancy and Engineering Service, etc. IECL has also diversified into the design, construction and management of Hydro dams, Rice irrigation dams and systems, Commercial Large Scale Agriculture, Eco-Park Tourism and Rural Water Supply system.

IECL are to build quality construction projects according to their original specifications, on time and in budget. Architectural craftsmanship, engineering, integrity, honesty, and quality workmanship are what we built our reputation on over the last three years.

We are committed to understanding the changing needs of our clients and our business will evolve to ensure we continue to satisfy their requirements. We work with our clients in an open and collaborative way and have a desire to prove that we can provide the service and the best finished product at a competitive price.



Site preparation including bulk earthworks for Housing Development at Gerehu Heights



Laying of Asphalt Overlay at Parliament



Landfill Cap Construction Works, PNG LNG

## 2. Our Vision

To be a respectable infrastructure development and engineering company, delivering beyond expectation, always.

## 3. Our Mission

**Our mission is:** To perform for our customers the highest level of quality construction services at fair and market competitive prices. To ensure the longevity of our company through repeat and referral business achieved by customer satisfaction in all areas including timeliness, attention to detail and service-minded attitudes. To maintain the highest levels of professionalism, integrity, honesty and fairness in our relationships with our suppliers, subcontractors, professional associates and customers.



## 4. Expertise

IECL has deep experience in dreamless sector of civil works, electrical works, building constructions and maintenance, Consultancy and Engineering Service, etc. It also has experience in dam to irrigation systems, agriculture Since enterprise needs are becoming more challenging, change is more frequent and projects require a variety of skills, we operate cross platform teams for complex projects fusing different technologies.

## 5. Services

The company serves its customers at every project phase, from strategy formulation through design, project management and implementation right through to support and upgrades. We are committed to best practices and professional integrity to ensure we

deliver quality. Customer satisfaction drives every aspect of their commercial contractor business. These time-honored qualities are incorporated into every project built by IECL.



**IECL's** ability to combine the right equipment with our experienced crews and project managers ensures that your site is ready on time -even on an accelerated schedule.

Although, our company is quite new, our workforce comprises of highly qualified technical personnel who are professionals in the different facets of infrastructure development and engineering. They range from range from roads and bridges, waste management & landfills, environment, airports, highways, residential and industrial developments, water supply and sanitation and others. IECL provides the highest quality of service for just about every type of engineering project.



## 5.1 CONSULTING SERVICES

### Civil Engineering

IECL provide a range of civil engineering consulting services including:

- *Project (Infrastructure) Management from initial concept, to design, development and completion stage;*
- *Feasibility Studies and initial plan of Project Proposals;*
- *Provisions of technical expertise and relevant engineering solutions to suit client's scope and budget;*
- *Scope and costing of new and current existing infrastructure projects*
- *Preparation of Tender documents;*
- *Supervision of Infrastructure Projects, be it a new or maintenance projects and rehabilitation of existing infrastructure;*

## 5.2 CONSTRUCTION SERVICES

In the construction strand, IECL provides the following services including:

- *Rural Roads and Highways;*
- *Bridges;*
- *Commercial Buildings;*
- *Residential & Industrial developments;*
- *Community Centers;*
- *Landfill;*
- *Water supply & Sanitation; and*
- *Urban Renewal Environmental Improvements (Lands capping)*



Landfill Capping Works Construction . Consulting Project Manager - Percy Raymond



---

### 5.3 PLANTS & EQUIPMENT HIRE SERVICES

IECL provides a range of plants and equipment for hire as well and these includes:

- Motor Graders;
- Hydraulic Excavators including rock breakers;
- Drum Rollers;
- Backhoes;
- Dozers;
- Tipper Trucks (10 & 12 cubic meters)

We can also outsource specific equipment from our alliances and associates as per our clients requirements.

### 5.4 SURVEYING

**In our surveying strand, Scope of services offered by IECL and its alliances are:**

- Land Administration and Management
  - Data Capture and Generation
  - Data Processing
  - Data Management and Storage
  - Records Reconstruction and Rejuvenation
- Land Information Systems
  - The development of computer-based spatial databases and working maps
  - The linking of land related data in textual form to these graphic databases
- Geodetic Surveying
  - Global Positioning system (GPS)
  - Precise Horizontal and Vertical Control
  - Large Scale Cadastral Survey
  - Sub-division Planning Design and Survey
  - Engineering Surveys
- Other Surveying Services
  - Geographic Information System
  - Topographic Mapping
  - Bathymetric Survey
  - Route Location and Definition
  - Water and Power Transmission Line Survey
  - Settlement and Resettlement Design and Survey



- 
- Seaport and Airport Engineering Survey

## 5.5 OTHER SPECIALIST ENGINEERING SERVICES

IECL also provides the following services with its specialist International Partners who are available on short notice:

- Hydro Dam Design, Construction and Management
- Irrigation System Design, Construction and Management
- Commercial large scale agricultural *Design*, Construction and Management
- Eco-Park Tourism Design, Construction and Management
- Rural water system design and construction

## 6. Our Approach To Quality

- ✚ The Quality group is a collection of individuals responsible for implementing IECL Quality Policy.
- ✚ The Quality group is well supported by the Construction Quality Assurance, Civil Engineering Group, knowledge Management Group, and the Training Group.
- ✚ The Civil Quality Assurance group ensures that the project quality activities are planned and implemented in accordance with our Quality Policy, in all deliverables.
- ✚ The Civil Engineering Group defines, maintains and improves our Quality Management System.
- ✚ The Knowledge Management group ensure latest technology is incorporated in to our Tools, Techniques and Methodologies used to deliver high-quality services to our customers ensure continuous process improvement.

## 7. Health & Safety

The safety of our workforce and anyone who is affected by our work of the highest regard. Our H & S Policy meets all legislative requirements and is accredited ISO 1800:1 At IECL, we have developed a culture that promotes an injury-free environment and provides the safest workplace possible for our employees, subcontractors, clients and others who enter or who near our construction sites. Our mantra is: "Every worker goes home from each of our jobs, every day."



We are dedicated to elevating the standards for safety in the construction industry through a wide variety of methods including zero-tolerance drug testing and others. Through innovative training and education programs, we also provide our employees and subcontractors with the tools, knowledge and resources they need to increase safety, reduce risk and improve loss control on every project we manage.

## 8. Environment

IECL recognizes that in society today environmental issues are of concern to its customers, suppliers, employees and the community as whole, and will in partnership with them, industry and the regulatory authorities to improve the quality of life in general. We maintain a proactive environmental management system as per ISO 14001.

## 9. Company Staff

Our employees are our most valuable asset and we give full priority to their development, welfare and health. We always strive to improve our performance on safety. We show respect for and value all individuals for their diverse backgrounds, experience, styles, approaches and ideas. Together we a difference and work as one.

### 9.1 Koren Maso – MSc.PM,AMP,CPAPNG,B.BusAcct/Comp

**Managing Director**



Koren Maso is an experienced Project Manager and qualified Accountant by Profession. He holds a Master of Science in Project Management, High Performance Certificate in Australian Aspiring Managers, Member of Certified Practising Accountants and Bachelor Degree in Accounting and Computing.

He has wealth of industrial experience with the senior executive management positions in various multi-international corporations in PNG with more than 15 plus years of industry experience both in private and public sector.

Koren Maso will be responsible for overall corporate vision and mission to provide high standard operations that is more acceptable to the business ethics and the industry standards to ensure customer satisfactory is non-negotiable for the quality and project delivery in the expected timeframe and within the allocated budget in a more effective and efficient procurement system to meet the customer's expectation.

Most importantly, his connections with both private and public sectors will add more value to the team and make a great impact on the focus of the business and its goals can be reached, with a theme "Building the Future through Connecting the Unreachable".

## **9.2 Ms Vivienne Pupune – MIEPNG 2249, Civil Eng**

### **General Manager**

Vivienne Pupunefa is an experienced qualified and certified civil engineer and has well over 20 plus years of experience in the civil engineering field. She is an experienced Project Manager and a certified and qualified Project Administrator. She has vast civil works and project management experience spanning over 15years around Papua New Guinea. She worked with Shorncliffe (PNG) Ltd for 10 years as Project Tender Engineer and Contract Manageress and with Dekenai Constructions Ltd for more than 8 years as Senior Group Engineer and Project Contracts Administrator bidding more multi-million Kina projects in PNG last 8 years and secured more projects and delivered successfully in PNG. She has wealth of experience with ADB Projects, World Bank Projects and Papua Papua New Guinea Government funded projects. She also assisted with review and assessment of new bridges and road construction on PNG Central Supplies Tenders Boards funded projects.

She is experienced both as a construction and consulting engineer specializing in Roads/Highway Engineering, Bridges, Landfill works, Mine Waste Management, Bulk



---

Earthworks, Dredging and others. She is currently the General Manager and ensures that the day to day operations of the company is progressing as planned.

### **9.3 Percy Raymond – MIEPNG, BSc.Civil Eng**

#### **Project Advisor**

Percy Raymond has a Bachelor of Science in Civil Engineering from the Papua New University of Technology and has well over 14 plus years of experience in the civil engineering field. He is an experienced Project Manager and a certified and qualified practicing civil engineer. He has vast civil works and project management experience spanning over 15 years around Papua New Guinea. He is experienced both as a construction and consulting engineer specializing in Roads/Highway Engineering, Bridges, Landfill works, Mine Waste Management, Bulk Earthworks, Dredging and others. He is currently the Project Advisor and ensures that the day to day operations of the company is progressing as planned.

### **9.4 Mack Makot – MIEPNG, BSc.Civil Eng, Diplo.Agri Eng**

#### **Site Supervisor/Engineer**

Mack is a highly regarded registered civil engineer and a member of the Institute of Engineers PNG. He has over 29 years of experience as a roads engineer with various organizations in the public and private sectors alike. He also has a Post Graduate

Diploma in Agricultural Technologies and has a stint with the University of Natural Resources and Science as a fulltime tutor and Lecturer. As a project manager he ensure that our current projects are managed and implemented as per the technical specification and standards and to the satisfaction of our clients.

### **9.5 Dennis Aiwara – MIEPNG, BSc.Civil Eng**

#### **Project Engineer/Geotechnical Engineer**

Dennis is a highly qualified registered civil/geotechnical engineer. He has a bachelor's degree in civil engineering from the PNG University of Technology and has over 10 years of practical experience as a geotechnical engineer with various reputable organizations. He is involved with carrying out geotechnical investigations and also prepare foundation designs for our buildings/structures at Yambi station.

### **9.6 Bobby Sogavo**

#### **Business Development Manager**

Mr. Bobby Sogavo is the Business Development Manager with a bachelor degree in Business Management from the Devine Word University, Madang, Madang Province. He is an experienced Manager with over 10 plus years of experience and has worked with several organizations both private and public including the Livestock and agro-industry industries.

## 9.7 Glenn David Nami

### Marketing Manager

Mr. Glenn David Nami is the Business Executive Marketing Manager with a diploma in Computer Networking and a bachelor degree in Education (incomplete) from the University of Goroka, Eastern Highlands Province. He is an experienced Manager with over 10 plus years of experience and has worked with several organizations in the safety inspector role, project manager role and also coaching and mentoring role in professional athletics sports in Rugby League both in PNG and International Scene.

## 9.8 Paul Kilipiah

### Occupational Health Safety & Environmental Officer

Mr. Kilipiah is our OHS & E Officer. He is a highly trained professional with over 10 years of experience in this field. Mr Kilipiah has been trained in all aspects of OHSE while attached with various multinational organizations including SPIECAPAG (LNG Projects), PUMA Energy (Down Stream Processing), Matrix Constructions and others.

Mr Kilipiah ensures that all our OHS&E policies are implemented in compliance with the respective Government Authority Standards.

## 10. Our Plants & Equipment

Item No.	Equipment Type	Made/ Model	Year of Manufacture	No. of Units	Own/ Lease/ Manage	Location
1.	Shantui Road Grader	SG18-3	2015	1	Own	Port Moresby
2.	JCB Hydraulic Excavator with Hammer	JS205LC HPW	2015	1	Own	Port Moresby
3.	JCB Smooth Drum Roller	VM115D	2015	1	Own	Port Moresby

4.	Komatsu Grader		2016	1	Lease	Goroka
5.	Komatsu Excavator	PC200	2016	1	Lease	Goroka
6	Komatsu Excavator	PC70	2016	1	Lease	Goroka
7	CAT Backhoe		2016	1	Lease	Goroka
8	Bomag, Smooth Drum Roller	10T	2016	1	Lease	Goroka



## 11. Glimpses of Project – Our Industry Experience in Road Construction

Infrastructure Engineering Construction Limited and its employees have been exposed to and undertaken different aspects of civil engineering works. The following pictures shows some of the projects undertaken as a company or as individual managing Construction.

## DRAINAGE

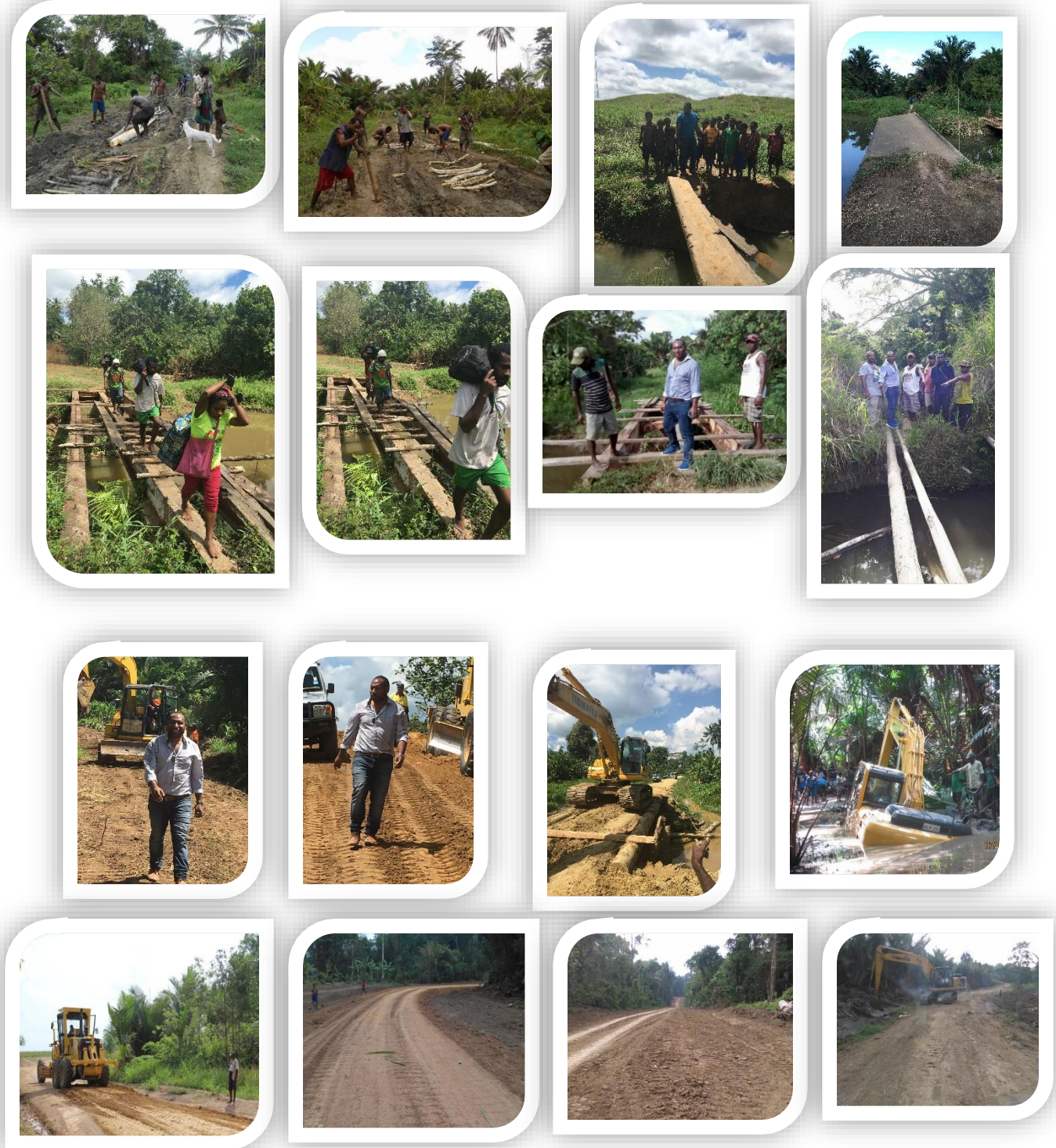


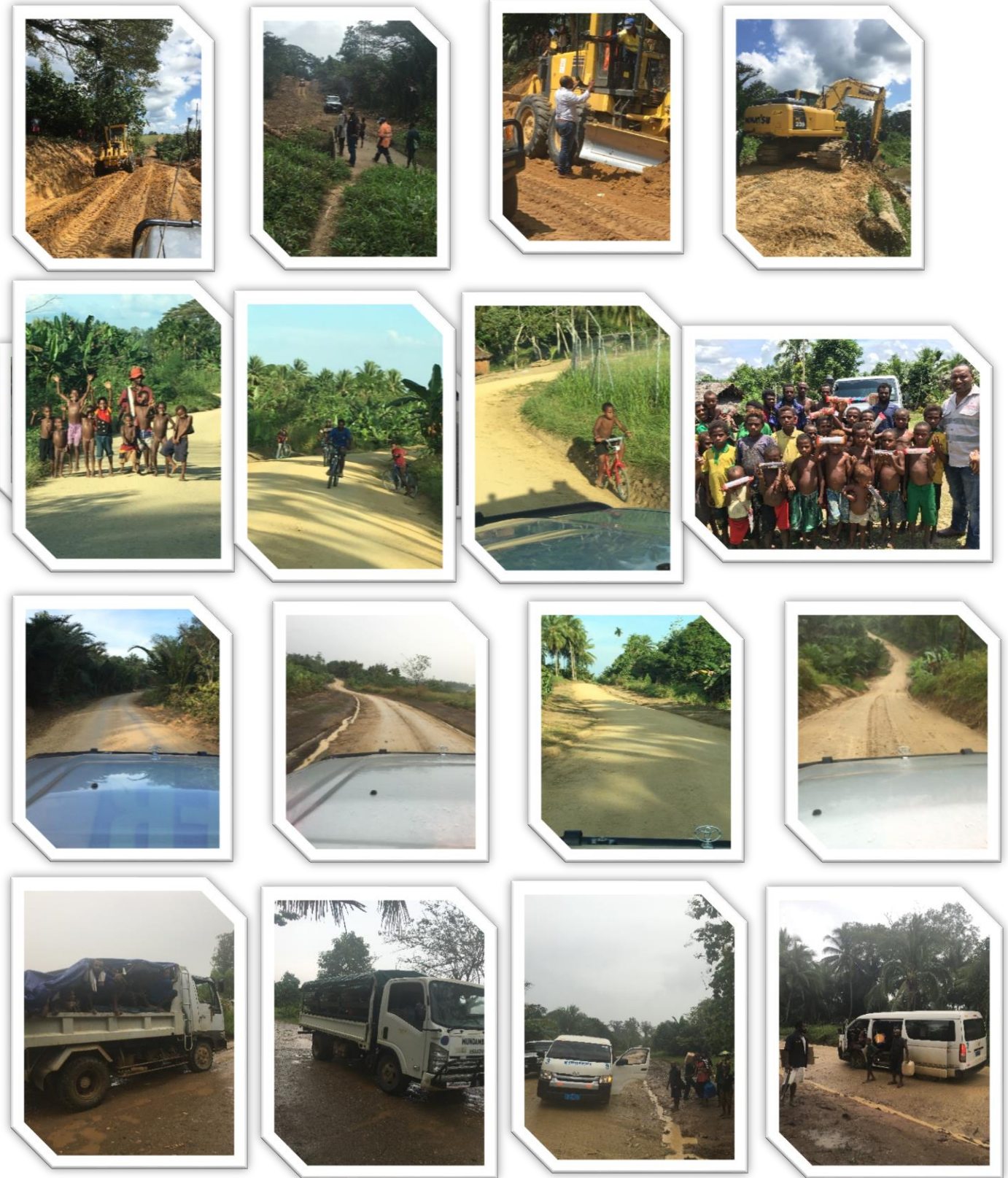
Drainage Works at Yambi Station. This is in preparation for the Development of Wosera Gawi District Head Quarters

## EARTHWORKS



**RURAL ROAD CONSTRUCTION – Connecting the Unreachable Border of Wosera-Gawi, Aitape-Lumi, Nuku and Drikiki in the East and West Sepik Province. 2014 - 2016**





**WASTE MANAGEMENT – LANDFILL**



**ROAD SEALING - BITIMINOUS and SURFACING**







### Our Team Experience on these Projects

- Project Management/ and Supervision & Maintenance, Re-construction and construction of Petiko to Nungwaia Rural Road (50 km) Wosera Gawi District, ESP K2, 150,000.00 Contract Value
- Project Management and Supervision & Maintenance, Re-construction and construction of Serangwangdu to Pukoko Rural Road (10 km), Wosera Gawi, ESP. K430,000.00 Contract Value
- Project Management and Supervision & Maintenance, Re-construction and construction of Wambisa to Bukuwi Rural Ring Road (25 km), Wosera Gawi, ESP. K1,0750,000.00 Contract Value
- Project Management and Supervision & Maintenance, Re-construction and construction of Buruwi to Torembi Rural Road (10km), Wosera Gawi, ESP
- Culvert Construction and Associated Drainage Works at Yambi Station Roads, Wosera Gawi, ESP. K430,000.00 Contract Value
- Site preparation works for various housing projects at Yambi Station

- Project Management: Site preparation works for Gerehu Heights Housing development Projects, Port Moresby.
- Sealing of Parliament House roads, Port Moresby.

## Road Construction Project Management Experience 2009 – 2017

<b>Contract Identification</b>	<b>Scope of Work</b>	<b>Employer &amp; Funding Agent</b>	<b>Start Date</b>	<b>Finish Date</b>	<b>Contract Value (PGK)</b>
<b>Design &amp; Construct Contract: CSTB 2930 - EPC Contract - Kieta to Toimonapu section of the Aropa Road in the Autonomous Region of Bougainville.</b>	Engineering, Procurement and Construction (EPC)	Independent State of PNG Dept. Works - New Ireland Province,	Oct-15	Oct-17	145,947,491.00
<b>Contract No: SC42-SB-08AW Upgrade to seal Boluminski Highway from Kanapit to Bopire Bridge (17.23 km) in New Ireland Province. VARIATION</b>	Upgrading & sealing	PNG Gov - Dept of Works	Jul-15	Mar-16	7,532,151.00
<b>CSTB 2721, DOW/RMRPII/02/GLF/2013, UPGRADE TO SEAL HIRITANO HIGHWAY BETWEEN MALALAU STATION AND EPO IN GULF PROVINCE</b>	Upgrading & sealing	Independent State of PNG Dept. Works, FUNDED BY WORLD BANK	Feb-14	Feb-16	89,799,923.03
<b>Upgrading &amp; asphalt surfacing of Erima back road from Erima R/A to Kumul Flyover, NCD</b>	Road upgrading including street lighting	National Capital District Commission (NCDC),	Aug-15	Nov-15	6,449,596.12
<b>SM 1/2015, BITUMINOUS RESEALING OF ARAWA TO RIGU BRIDGE (KIETA) AND ARAWA'S PRINCIPAL TOWN STREETS, AUTONOMOUS REGION OF BOUGAINVILLE</b>	Sealing Works only	ROAD CONSULT (AUST) PTY LTD, BUKA,	Jul-15	Nov-15	11,643,045.36
<b>SM3/2015, BITUMINOUS RESEALING OF THE MORGAN JUNCTION TO ARAKAWAU ROAD INCLUDING THE APPROACHES TO THE URUAVI BRIDGES AT WAKUNAI, AROB</b>	Sealing Works only	ROAD CONSULT (AUST) PTY LTD, BUKA,	Aug-15	Nov-15	4,841,935.56
<b>SEALING BUKA TOWN ROADS</b>	Sealing Works only	ROAD CONSULT (AUST) PTY LTD, BUKA,	Dec-14	Aug-15	9,990,980.34
<b>RESEALING OF CHAMPION PARADE, NCD</b>	Sealing Works only	NCDC	Mar-15	Jun-15	2,500,000.00
<b>NCDC ROAD WORKS - ROAD REHAB AND SURFACING WORKS OF LAURABADA AVENUE AND TURUA AVENUE IN NCD</b>	ROAD REHAB AND SURFACING WORKS	NATIONAL CAPITAL DISTRICT COMMISSION,	Jan-15	Jun-15	2,337,908.68
<b>REHAB &amp; SURFACING OF PISTOL CLUB - NCDC ROADS</b>	ROAD REHAB AND SURFACING WORKS	NCDC	Apr-15	Jun-15	1,407,777.80
<b>NCDC ROAD WORKS - ROAD REHAB AND SURFACING WORKS OF LAURABADA AVENUE AND TURUA AVENUE IN NCD</b>	ROAD REHAB AND SURFACING WORKS	NATIONAL CAPITAL DISTRICT COMMISSION, Ambros / Dion	Jan-15	Jun-15	2,337,908.68
<b>UPGRADING OF WARDSTRIP TO 4 LANES WITH STREET LIGHTING, NCD ROADS REHAB</b>	Sealing Works only	NCDC	Mar-15	May-15	5,106,078.56
<b>CSTB 2921, SC31-PR-13CP, PAVEMENT RECYCLING, STABILIZATION AND SEALING OF BUSU ROAD FROM MALAHANG IFC GATE (CH0+00KM) TO BUMAYONG MARKET (CH6+29KM) PACKAGE 5, IN LAE, MOROBE PROVINCE</b>	Pavement Recycling & Stabilization Works including sealing and drainage works	Independent State of PNG Dept. Works Lae	Jan-14	May-15	61,624,084.29
<b>CSTB 2868, 44-AT-24B, UPGRADE TO SEAL FROM AREA 7 TO RUMA AND MAINTENANCE &amp; RESEAL BETWEEN TIAURU AND ALIAI BRIDGES ON NEW BRITAIN HIGHWAY IN WEST NEW BRITAIN PROVINCE</b>	Resealing & maintenance	Independent State of PNG & Australia Aid (TSSP)	Jun-14	May-15	9,990,980.34
<b>CSTB 3012 - MORGAN JUNCTION TO TUNURU MTD P ROADS, ARB</b>	Sealing Works only	Independent State of PNG & Australia Aid (TSSP)	Dec-14	Apr-15	8,525,321.00
<b>KOOKABARRA FLYOVER - ASPHALT CONCRETE SURFACING WORKS</b>	ASPHALT SURFACING	HAWKINS PNG LTD	Mar-15	May-15	4,483,750.00
<b>CSTB 2798, RESEALING OF BULUMINSKI HIGHWAY FROM KABIL BRIDGE (CH 134.5) TO KIMADANN BRIDGE (CH 162.8) IN NEW IRELAND PROVINCE</b>	Resealing	Independent State of PNG & Australia Aid (TSSP)	Jun-14	May-15	7,459,733.85
<b>NAC86-33-34B2, PAVEMENT WORKS - KIETA (AROPA) AERODROME DEVELOPMENT, AROB</b>	PAVEMENT WORKS ONLY	NATIONAL AIRPORTS CORPORATION (NAC)	Sep-14	Dec-14	8,276,127.06



<b>CSTB 2781, Pavement Recycling , Stabilizing and Asphalt Surfacing of Air Corps Road from Milford Haven / Air Corps Road Junction (Ch0+00km) to Butibam/Markham Road Junction (Ch2+750km) in Lae, Morobe Province</b>	Pavement Recycling , Stabilizing and Asphalt Surfacing	Independent State of PNG Dept. Works Lae	Oct-13	Feb-15	31,888,071.35
<b>DESIGN &amp; CONSTRUCTION OF HUBERT MURRAY HIGHWAY UPGRADING (ERIMA TO 9 MILE), NCD</b>	Design & construction of 4 lane road & 4 lane bridge	Independent State of PNG, National Capital District Commission	Jun-13	Jan-15	77,842,880.84
<b>8 MILE ESTATE SEALING WORKS</b>	Sealing Works only	DELTA CORPORATION	Dec-14	Dec-14	858,869.55
<b>CSTB 2746, Upgrade to Seal Buluminski Highway from Kanapit to Pire Bridge (12.93km) in New Ireland Province</b>	Upgrading & sealing	Independent State of PNG Dept. Works Kavieng	Sep-13	Nov-14	9,995,280.34
<b>Buka Town Roads Upgrading</b>	Upgrading & sealing works	Independent State of PNG Dept. of Prime Minister	May-14	Nov-14	9,990,981.00
<b>PSTB-COI-WNBP-02/2013, PAVEMENT UPGRADING, SEALING &amp; DRAINAGE WORKS ON KIMBE TOWN ROADS</b>	PAVEMENT UPGRADING, SEALING & DRAINAGE WORKS	Independent State of PNG Dept. Works KIMBE	Jan-14	Jun-14	1,062,051.00
<b>PSTB-COI-WNBP-03 &amp; 04/2013, PHASE 1 &amp; 2 IN-SITU PAVEMENT RECYCLING, STABILIZATION &amp; BITUMINOUS RESURFACING OF MAI KIMBE SECTION (5KM) ON THE NB HWY IN WNBP</b>	IN-SITU PAVEMENT RECYCLING, STABILIZATION & BITUMINOUS RESURFACING WORKS	Independent State of PNG Dept. Works KIMBE	Jan-14	Jun-14	5,825,538.11
<b>MORESBY SOUTH ELECTORATE ROAD REHAB</b>	ROAD REHAB	MEMBER FOR MORESBY SOUTH ELECTORATE	May-13	Mar-14	14,042,240.38
<b>GARAMUT SHOPPING COMPLEX CARPARK WORKS</b>	CARPARK WORKS	AES & GARAMUT ENT	Jan-14	Jan-14	1,617,019.80

## Road Construction Project Management Experience 2006 - 2008

Project	Year	Value PGK (Million)
<b>Upgrading, Grainage &amp; Sealing Works Sawmill Jn to Pasir Jn, Vanimo, West Sepik</b>	2007-2008	5.6 M
<b>Eastcape Roads Regravelling &amp; Sealing - Dadue to Lelehudi</b>	2008	8.75 M
<b>Regravelling &amp; Sealing Coastal Highway - Davi to Mussu, Sandaun Province</b>	2008	6.63 M
<b>Upgrading &amp; Sealing New Britain Highway - Bilomi to Koriri Bridge , WNBP</b>	2008	7.5 M
<b>Korinige to Kerowai Road Upgrading &amp; Sealing</b>	2007	8.4M
<b>Pavement Repairs Kundiawa Airport</b>	2007	0.5 M
<b>Pavement repairs, resealing and drainage works, North Coast Road Part 2, ENBP</b>	2007	6.37 M
<b>Oro Bay Pavement Repair Works - PNG Port Corporation</b>	2007	1.9 M
<b>Upgrade to Seal Kokoda Highway - Popondetta &amp; Irihambo, Oro Province</b>	2007	6.1 M
<b>Pavement Repairs and Resealing Coastal Highway, Pukpuk Bridge to Kumil Bridge in Madang Province.</b>	2007	3.5 M
<b>North Coast Road Part 2 Pakanairir to Tomatana, ENBP</b>	2007	6.37 M
<b>Routine, Periodic and Emergency Works on the Highlands Highway in Morobe Province (170 km)</b>	2007	18 M
<b>Pavement Repairs and Resealing Coastal Highway, Pukpuk Bridge to Kumil Bridge in Madang Province.</b>	2007	3.5 M

## Road Construction Project Management Experience 2002 - 2007

<b>Project</b>	<b>Year</b>	<b>Value PGK (million)</b>
<i>Highlands Highway Redevelopment - Mangiro Bridge to Kundiawa Town</i>	2006-07	31.9 M
<i>Chuave to Mave Road Project - Simbu Province</i>	2006-07	8.9 M
<i>Kokopo Town Roads Contract AE</i>	2006-07	8.77 M
<i>Reconstruction of Vudal Road to LAES, ENBP</i>	2006-07	6.97 M
<i>Resealing of New Britain Highway from Mosa Junction to Kimbe Town in West New Britain Province</i>	2006-07	5.68 M
<i>Repair works to a 10.3 km section of the Highlands Highway between Wara Simbu Bridge and the Mindima Village in Chimbu Province</i>	2006	4.16 M
<i>Repair Works to a 28.1 km section of the Highlands Highway between Miunde Bridge and the Wagamul Bridge in Western Highlands Province</i>	2006	7.69 M
<i>Road Maintenance between Togoba &amp; Kisenapoi WHP</i>	2006	7.69 M
<i>Drainage Improvement and Reconstruction of Vudal Road from Laes Junction to Vudal University in East New Britain Province</i>	2006	6.1 M
<i>Kokoda Highway (10 km)Phase II Project in Oro</i>	2005-06	7.78 M
<i>Road Maintenance of the Wau / Bulolo Road between Markham Bridge and Bulolo in Morobe Province.</i>	2005-06	3.51 M
<i>Pavement Repairs, Drainage and Sealing Works, North Coast Road Kerevat Country Club to Pakanairir (Part 1 – 11.00 km)in ENBP</i>	2005-06	1.7 M
<i>Jack Emmanuel Park Road and Carparking of the Proposed Kokopo Commercial Centre, Kokopo Town, East New Britain Province</i>	2005-06	0.64 M
<i>NCDC Roads Rehabilitation and Asphalt Surfacing</i>	2005	2.79 M
<i>Pavement Repairs and Resealing Coastal Highway (NR0009) - section 30 and 110 to 140, Madang Province</i>	2005	5.45M
<i>Resealing of Vudal Roads in East New Britain Province</i>	2004-05	1.7 M
<i>Resealing of Various Road, East New Britain Province</i>	2004-05	1.98 M
<i>Rapolo to Karavia Rd, ENBP (North Coast Road)</i>	2004-05	1.03M
<i>Drainage &amp; Sealing Works Warangoi/Williams Road, ENBP</i>	2004-05	2.99 M
<i>Maintenance to sections of the H/lands Hway-Mindima Village to Miunde Brg, Chimbu</i>	2004	4.83 M
<i>Bailu Putput Roads in East New Britain Province</i>	2004	2.24 M
<i>Upgrade to Seal Alotau to East Cape Road in Milne Bay Province</i>	2004	2.69 M
<i>Wau / Bulolo River bank Protection and scour repairs</i>	2003-2004	1.96 M
<i>Maintenance to sections of the H/lands Hway-Kongo Coffee &amp; Wara Simbu, Chimbu</i>	2003-2004	5.7 M
<i>Regravelling &amp; Drainage Works on the Sepik Highway, Touanumbu to Yangoru</i>	2003 - 2004	10.2M
<i>Regravelling &amp; Drainage Works on the Sepik Highway, Touanumbu to Yangoru</i>	2003	10.2M
<i>Maintenance &amp; Sealing Nadzab – 1 Mile in Morobe Province</i>	2003	5 M
<i>Gogol Bgdg to Airport Junction Rd maintenance in Madang</i>	2002-2003	7 M
<b>Project</b>	<b>Year</b>	<b>Value PGK (million)</b>
<i>75 km road maintenance to section of the H/lands H/way between Leron Bridge and Kassam Pass in Morobe Province</i>	2005	6.28 M
<i>Ramu Highway- Waterraise to Ramu road maintenance and sealing works</i>	2005	2.7 M
<i>Upgrade to Seal Kokoda Highway Phase I in Oro</i>	2005	9.3 M
<i>Scouring repairs and river bank protection on the Wau Bulolo Road</i>	2005	1.96 M
<i>Maintenance to sections of the H/lands Hway-Tararan Vill &amp; Leron Brg, Morobe</i>	2004 – 2005	4 0 M
<i>Maintenance to sections of the H/lands Hway- Tararan Village &amp; Nadzab Airport Junc,Morobe</i>	2004	4.0 M
<i>61 km Road maintenance section of the Wau Bulolo Road – Tuoima Brg &amp; Bulolo in Morobe</i>	2003-2004	4.9 M
<i>Lufa – Oliguti Rd maintenanccec &amp; sealing, Eastern H'lands</i>	2002-2003	5 M
<i>Nadzab Airport Runway extention and asphalt surfacing - NAC</i>	2002	20 M

## 13.0 Our Partners/Alliances/Associates

### 1. DOUBLE-TRANS (PNG) LIMITED

- ✚ Specialized in sealing and asphalt works

### 2. HBS CONSTRUCT

- ✚ Specialized in Road Construction Machineries Supplies

### 3. H.O NOVELOSO SURVEYING

#### Scope of services offered:

- Land Administration and Management
- Land Information Systems
- Geodetic Surveying
- Other Surveying Services including
  - Geographic Information System
  - Topographic Mapping
  - Bathymetric Survey
  - Route Location and Definition
  - Water and Power Transmission Line Survey
  - Settlement and Resettlement Design and Survey
  - Seaport and Airport Engineering Survey

## 14. Contact Person

### 1. Koren Maso – Managing Director

Digicel: +675 71976166  
Telikom : +675 75535232/78018396

Email: [masokoren@gmail.com](mailto:masokoren@gmail.com) / [kmaso@iecpng.com.pg](mailto:kmaso@iecpng.com.pg)

### 2. Ms Vivienne Pupunefa – General Manager

Bmobile: +675 76371196  
Digicel: +675 72806948  
Email: [vpupunefa@gmail.com](mailto:vpupunefa@gmail.com)

## 15. Office & Location

### **Head Office:**

Garden City Shopping Center, Level 1  
Angau Drive, Boroko. National capital District.

### **Site office:**

Kafana Laydown Zone  
Golf Club Road, Gorokai District  
Eastern Highlands Province

### **Site office:**

Barola Bridge, Highlands Highway, Kainantu District  
Eastern Highlands Province

## 16. Appendices

- a. IPA Certificate of Incorporation
- b. IPA Certificate of Compliance
- c. Insurance Certificate for Plant & Equipment